

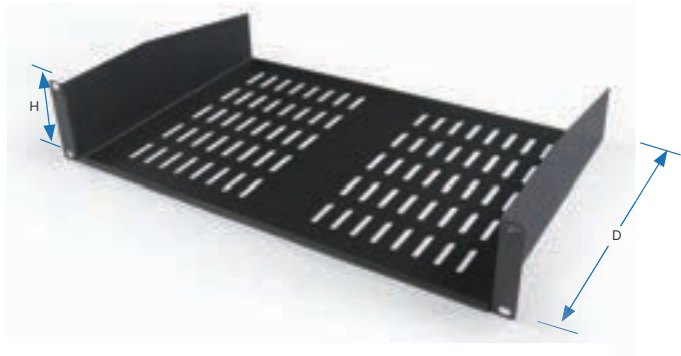
# Rack Accessories

## Shelves and Drawers

### Cantilever Shelf

Used for supporting internal equipment of cabinet

- Material** : t1.2 SPCC cold rolled steel.
- Surface Finish** : Degreasing, pickling, phosphoric, powder coated.
- Loading capacity** : 20 KG



Model	H	D	Usage
P210125B	250	44	Height1U, Depth250 apply to 19"network cabinet
P210130B	300	44	Height1U, Depth300 apply to 19"network cabinet
P210135B	350	44	Height1U, Depth350 apply to 19"network cabinet
P210230B	300	88	Height2U, Depth300 apply to 19"network cabinet
P210235B	350	88	Height2U, Depth350 apply to 19"network cabinet
P210240B	400	88	Height2U, Depth400 apply to 19"network cabinet

### Cantilever L Level

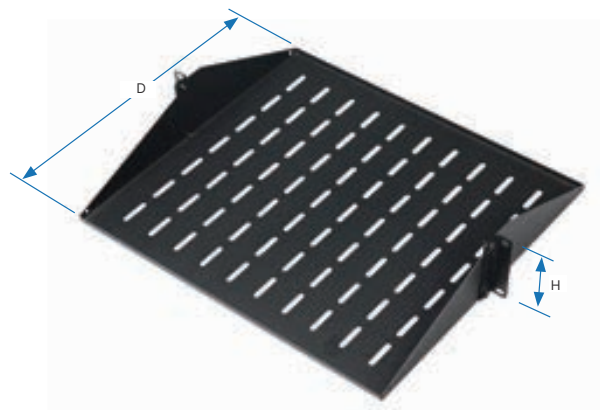
- Material** : t1.2 SPCC cold rolled steel.
- Surface Finish** : Degreasing, pickling, phosphoric, powder coated.
- Loading capacity** : 18 KG



Model	H	D	Usage
P24125B	88.5	400	apply to cantilever shelf or rear of the equipment

### 2U Low-Profile Shelf

- Material** : t1.2 SPCC cold rolled steel.
- Surface Finish** : Degreasing, pickling, phosphoric, powder coated.
- Loading capacity** : 18 KG



Model	Width	Height	Depth	Usage
P2202B	482.6	88.5	400	apply to various open racks