

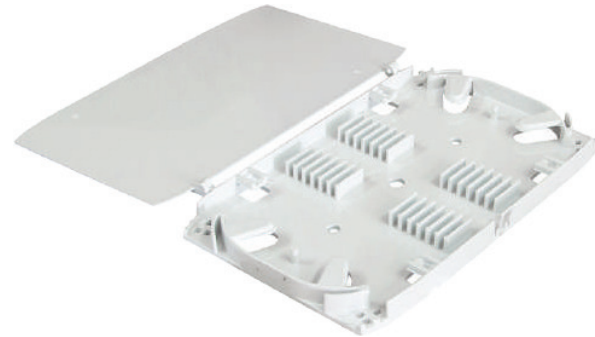
ODTray

Fiber Optic Splice Tray

Overview

Fiber optic splice tray is used for optic fiber management, storage and fiber optic fusion splice protection, easy for installation and movement.

The splice tray expands fiber splice capabilities as well as provides the splicing location for fiber optic cables. It can be put into the fiber distribution frame, fiber splice closure, optic terminal box etc.



Features

- Splice-tray configurations offered: 6 , 12 and 24 Fibers.
- Types of Splice Trays: Plastic (with a clear Cover)
- Can be used in 1U, 2U or 4U Rack-mount patch panels.

Applications

- FTTx networks
- Data communication networks
- Indoor applications

Specifications

Capacity	6-24 Ports
Material	ABS Flame
Environment Temperature	-40°C ~ +55°C
Relative Humidity	≤85% (30°C)
Atmosphere Pressure	70 ~ 106KPa
Tensile Strength	>1000N
Fiber Bending Radius	≥40mm
Sealing Performance	Unchanged for 72 hour on pressure 70kpa
Life	1000 times

Available Options

ODTray0602	6-Port fiber optic splice tray	6-Port
ODTray1202	12-Port fiber optic splice tray	12-Port
ODTray2402	24-Port fiber optic splice tray	24-Port